

# HIGHLAND PARK

7777 – 7821 W MORRIS STREET – INDIANAPOLIS, IN

FOR LEASE



## PROPERTY OVERVIEW

- Freestanding buildings for lease
- 2 10' x 10' drive-in doors per building
- 12' clear height
- Zoned I-4-S
- Close to Indianapolis International Airport & many area amenities
- Various building layouts available
- Potential for outside storage
- Available frontage on West Morris Street
- 2.5 miles / less than 5 minutes from I-465

### CONTACT:

RYAN KELLY  
317.713.2118

rkelly@SummitRealtyGroup.com

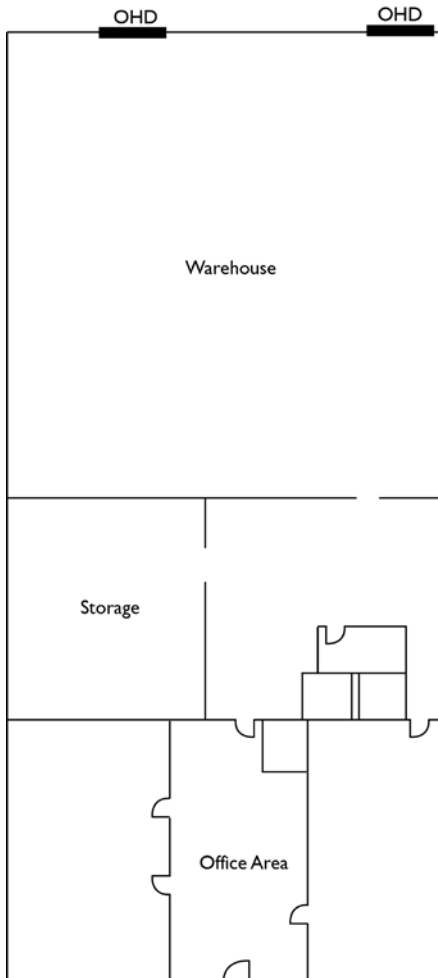


# HIGHLAND PARK



7809 W MORRIS

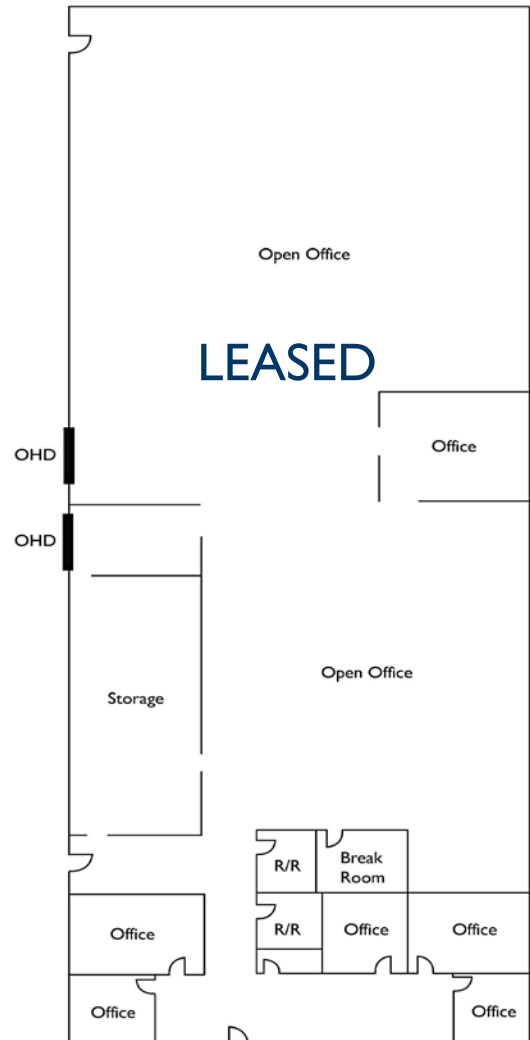
- 5,300 SF total
- 2,500 SF office
- Two 10' x 10' overhead doors
- Frontage on West Morris Street



Leased

7811 W MORRIS

- 6,656 SF total
- 100% office
- Mix of private offices & open space
- 100% air conditioned
- Two 10' x 10' overhead doors
- Frontage on West Morris Street
- 2/3 of space can be converted into warehouse

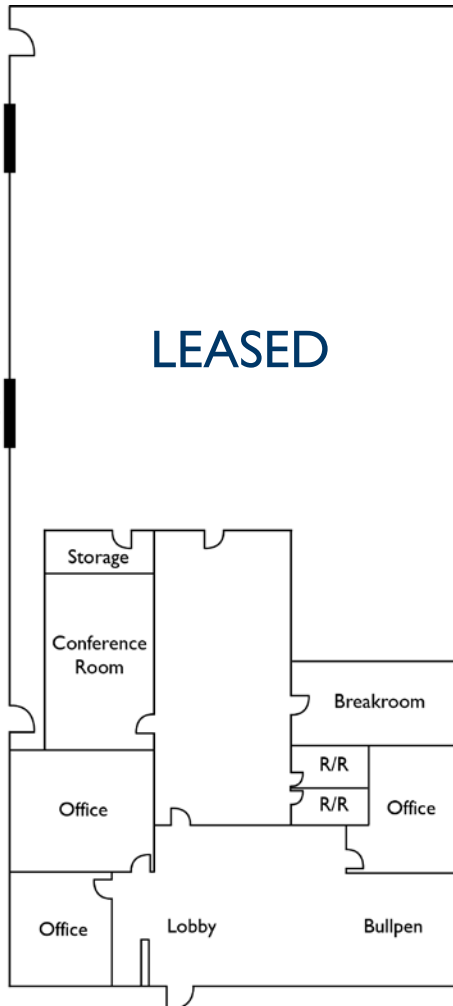


\* Drawings are not to scale



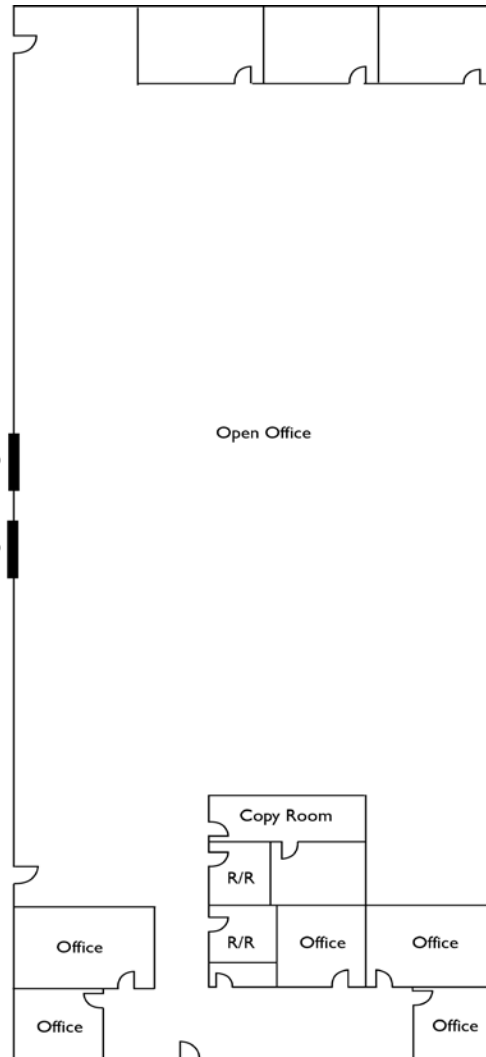
### 7787 W MORRIS

- 5,300 SF total
- 1,764 SF office space
- Two 10' x 10' overhead doors
- Existing fenced outside storage area (expandable)
- Air conditioned shop area
- Available December 1, 2014



### 7821 W MORRIS

- 6,656 SF total
- 100% office space
- Two 10' x 10' overhead doors
- Air conditioned
- Easily converted into warehouse space
- Fenced outside storage available





# HIGHLAND PARK



**CONTACT:**

**RYAN KELLY**  
317.713.2118  
rkelly@SummitRealtyGroup.com